

# TRUSTED PRECISION. A HISTORY OF INNOVATION.

Valleylab™ FT10 Energy Platform

Product Information Kit



**Medtronic**  
Further. Together

# A HERITAGE YOU CAN TRUST

## The Valleylab™ energy portfolio

You can have confidence in almost 50 years of quality energy-based products and innovation in the surgical space. Confidence delivered in surgical arenas, around the globe, day after day. Confidence in our unwavering commitment to positive patient outcomes.

The Valleylab™ energy portfolio offers the most comprehensive suite of energy-based surgical hand devices in the industry<sup>1</sup> — ranging from a series of trusted electrosurgical tools to advanced vessel-sealing instruments with LigaSure™ technology and generator equipment that powers it all.

Now we are excited to offer the latest advancements in energy-based surgical devices: the Valleylab™ FT10 energy platform.



# PERFORMANCE & PRECISION

The Valleylab™ FT10 energy platform not only drives our full portfolio of energy-based devices, it makes them better than ever.<sup>2,3</sup>

Improving all our devices' performance with faster sealing and cutting times<sup>†</sup> — for example, LigaSure™ vessel sealing is up to 50% faster<sup>3,†</sup> — the Valleylab™ FT10 energy platform delivers precise amounts of energy.<sup>2</sup>



<sup>†</sup>When compared to the Valleylab™ ForceTriad™ energy platform.

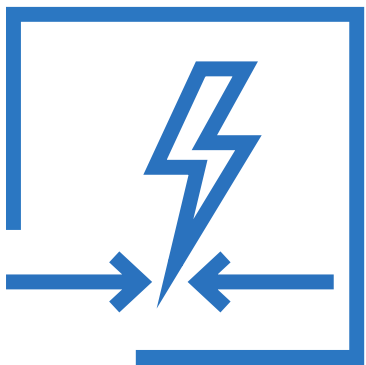
# ADVANCED INGENUITY



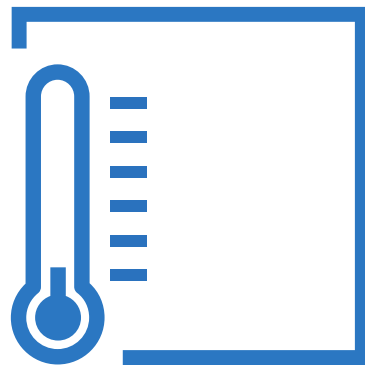
The Valleylab™ energy portfolio's best-in-class advanced energy and electrosurgery devices are all powered by smart generators that manage energy delivery with precision-enabling algorithms. The Valleylab™ FT10 energy platform's technology improves all surgical applications for the entire portfolio.<sup>2,3</sup>

## Next-generation changes

LigaSure™ technology is improved with:

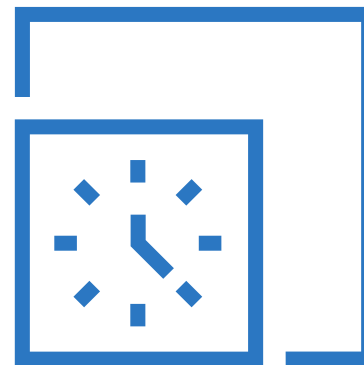


Up to **50% faster** sealing times<sup>3</sup>



**Lower** jaw temperatures<sup>4</sup>

Electrosurgical performance is more precise<sup>3</sup>:



Autobipolar has a **faster** activation time<sup>5</sup>



Monopolar performance is **improved**<sup>2</sup>



# SMART JUST GOT SMARTER

The built-in smart TissueFect™ tissue sensing technology in the Valleylab™ FT10 energy platform improves the speed and consistency of hand-held devices by reading tissue composition in real time.<sup>6</sup>

TissueFect™ technology examines device performance 434,000 times per second, monitoring tissue impedance and allowing effective and efficient energy delivery.<sup>6</sup> This technology is only available on Valleylab™ generators and drives all electrosurgical and advanced bipolar functions.

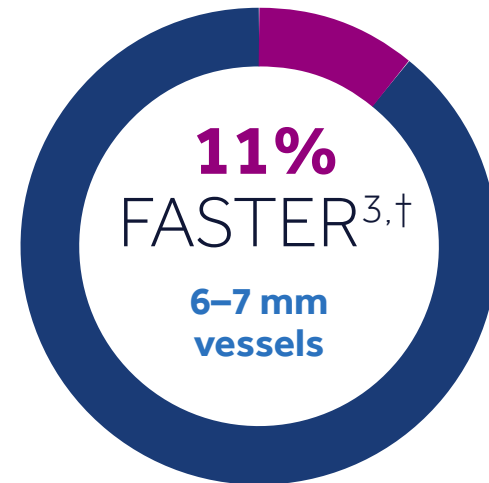
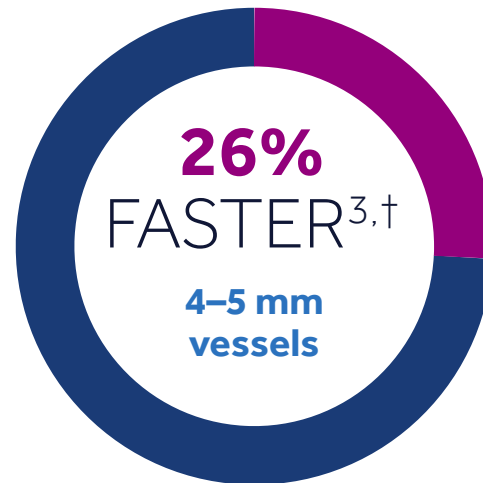
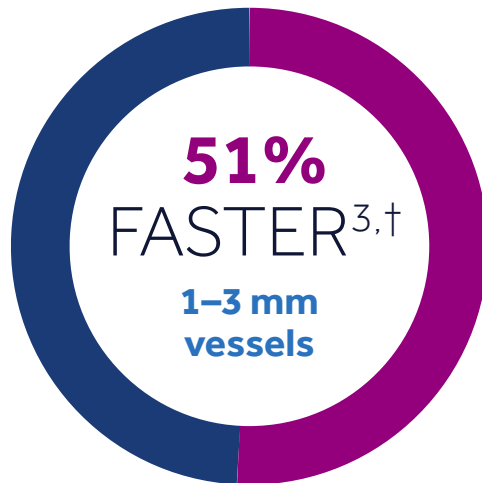


# IMPROVED TECHNOLOGY

Built-in smart TissueFect™ tissue sensing means ...



Our LigaSure™ portfolio has faster vessel-sealing speed<sup>3</sup>



**Our energy platform is more precise<sup>2</sup>**

- The Valleylab™ FT10 energy platform provides more precise monopolar energy delivery than the ForceTriad™ energy platform.<sup>2</sup>
- Autobipolar has a faster activation time.<sup>5</sup>
- Monopolar performance is improved.<sup>2</sup>

†When compared to the Valleylab™ ForceTriad™ energy platform.

# GENERATOR COMPARISON



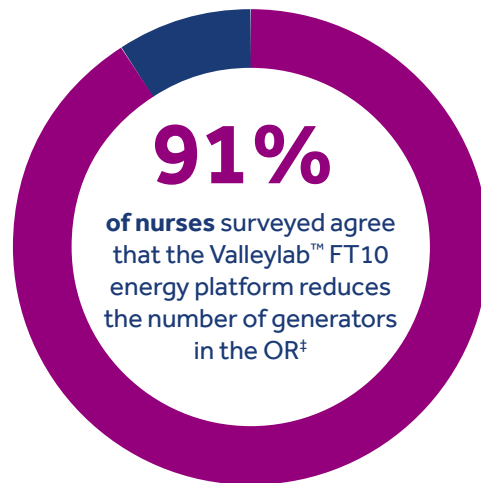
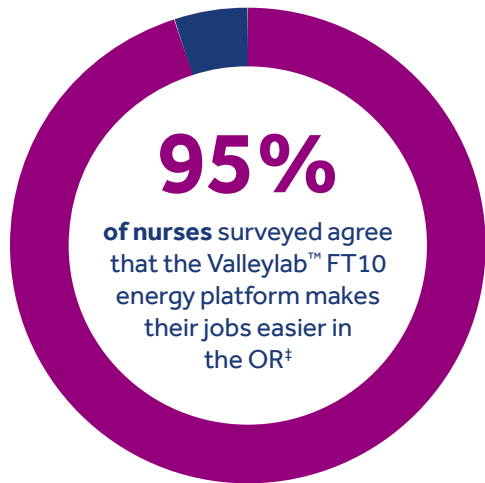
Features	Valleylab™ FT10 Energy Platform	ForceTriad™ Energy Platform
TissueFect™ Tissue Sensing Technology <sup>6</sup>	Reads tissue: 434,000 times per second	Reads tissue: 3,333 times per second
Software Upgradeable	Ethernet connection	Serial port connection
Bipolar Cable Compensation	Reads cable length and width for consistent ES output	Not available
Touch Screen	Single, simplified touch screen <sup>7</sup>	Three touch screens for each mode
New ES Settings	Soft coag <ul style="list-style-type: none"> <li>▪ Lower max jaw temperatures<sup>4,†</sup></li> <li>▪ Faster sealing times (1-4 seconds vs. 3-6 seconds with ForceTriad™ energy platform)<sup>3,†</sup></li> <li>▪ Automatic power settings require minimal setup and minimize need for further handling during surgery<sup>7,†</sup></li> <li>▪ Simple, intuitive controls and information displays<sup>7,†</sup></li> </ul>	Existing ES settings  Performance that set the standard against competitive devices
Performance		
<b>Dimensions</b>		
Weight (kg)	10.1	13.6
Width (cm)	35.8	45.8
Height (cm)	17	25.25
Depth (cm)	46.25	50.8

†Product validation testing January 27–30, 2015 February 24–27, 2015; 32 surgeons interviewed, 39 nurses interviewed.

# SIMPLIFIED SOLUTION

## Nurses and surgeons agree<sup>†,‡</sup>:

The Valleylab™ FT10 energy platform is simple to use, improves performance and takes up less room in the OR.



It's easy to train others on the Valleylab™ FT10 energy platform



More useful combination of devices in procedures

<sup>†</sup>When compared to the Valleylab™ ForceTriad™ energy platform.

<sup>‡</sup>Product validation testing January 27–30 2015, February 24–27 2015 ; 19 nurses interviewed.





# IMPROVED PERFORMANCE

**91%** of surgeons surveyed agree that the Valleylab™ FT10 energy platform provides **superior bipolar performance** and provides you with **improved control** during your procedures.<sup>7,†</sup>

**94%** of surgeons surveyed agree that increased clip detection speed instills **more confidence** in the system.<sup>7,†</sup>

**97%** of surgeons surveyed agree that the Valleylab™ FT10 energy platform provides an **improved surgical experience**.<sup>7,†</sup>

**100%** of nurses surveyed would be confident using the Valleylab™ FT10 energy platform in their next procedure.<sup>7,‡</sup>

The Valleylab™ FT10 energy platform has an average fusion cycle time of **1 to 4 seconds**.<sup>3</sup>

†Product validation testing January 27-30, 2015; February 24 - 27, 2015; 32 surgeons interviewed; compared to the ForceTriad™ energy platform.

‡Product validation testing January 27-30, 2015; February 24 - 27, 2015; 39 nurses interviewed; compared to the ForceTriad™ energy platform. interviewed.





# ORDERING INFORMATION

**VLFT10GEN** Valleylab™ FT10 Energy Platform

**VLFTCRT** Valleylab™ FT10 Cart

1. Based on ES and Advanced energy product catalogs compared to Ethicon's current catalog.
2. Ex-vivo testing model used to evaluate monopolar performance. Based on internal report #RE0064443 Rev A, Ex-vivo monopolar procedural flow evaluation on the Valleylab™ FT10 Orion. November 2014.
3. Bench testing model used to evaluate sealing time. Based on internal report #RE00025819 rev A, LigaSure™ data sources for VLFT10 white papers. September 2015.
4. Ex-vivo porcine bench testing model used to evaluate device temperature. Based on internal report #R0064462 rev B, LigaSure™ thermal profile Valleylab FT10. June 2016.
5. Based on internal report #R0064455, Autobipolar evaluation Valleylab™ FT10. February 2015.
6. Based on internal memo #RE00256209 rev A, Valleylab™ FT10 memo control system resolution in VLFT10GEN. March 2020.
7. Based on internal report #RE00005401, Product validation of Valleylab™ FT10 surgeon and nurse evaluation in simulated use. Jan.–Feb. 2015.

5920 Longbow Drive  
Boulder, Colorado 80301

800.722.8772

© 2020 Medtronic. All rights reserved.  
Medtronic, Medtronic logo and Further,  
Together are trademarks of Medtronic.  
All other brands are trademarks of a  
Medtronic company.  
09/2020 – US-SE-2000048 – [WF#377586]

[medtronic.com](https://www.medtronic.com)



**Medtronic**  
Further, Together